

INDIAN SUMMER JACKET

design by LEIGH RADFORD

LEIGH RADFORD USED A VARIETY OF DRESSY NOVELTY YARNS to embellish this simple, Asian-inspired jacket. The body is knitted in a deep gold with half-circles of celery green worked in intarsia along the center fronts to form the background for the embroidered border. Smooth and textured yarns in an assortment of spicy colors are stitched along the edges of the sleeves and front openings. The jacket fastens with twenty, tiny hook-and-eye closures.

Finished Size 37 (40, 44, 48½)" (94 [101.5, 112, 123] cm). Jacket shown measures 40" (101.5 cm).

Yarn S. R. Kertzer Super 10 (100% mercerized cotton; 249 yd [230 m]/125 g): #3358 ginger (MC), 4 (5, 5, 6) skeins; #3911 magenta, #3606 peridot, #3395 Persian red, and #3429 mulberry, 1 skein each. S. R. Kertzer Sari (100% polyamide; 104 yd [95 m]/50 g): #52 copper, 1 skein. DMC Six Strand Embroidery Floss (100% cotton; 8.7 yd [8 m]/skein): #30915 metallic magenta, 5 skeins; #30930 metallic blue, 3 skeins; #30580 metallic lime green, #33685 metallic brown/rose, and #924 teal/blue, 2 skeins each.

Needles Body and sleeves—Size 8 (5 mm): straight. Collar—Size 6 (4 mm): 32" (80-cm) circular (cir). I-cord—Size 8 (5 mm): set of 2 double pointed (dpn). Adjust needle size if necessary to obtain the correct gauge.

Notions Stitch holders; a few yards (meters) of waste yarn; markers (m); tapestry needle; twenty ¼" (6 mm) hook-and-eye sets; ½ yd (1.5 meter) matching magenta single bias seam tape; sharp-pointed sewing needle and matching magenta thread for attaching bias tape and hook-and-eye sets; size F/6 (4-mm) crochet hook for chained slip-stitch embroidery (optional).

Gauge 19 sts and 28 rows = 4" (10 cm) in St st.

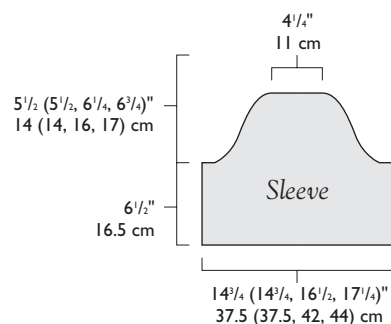
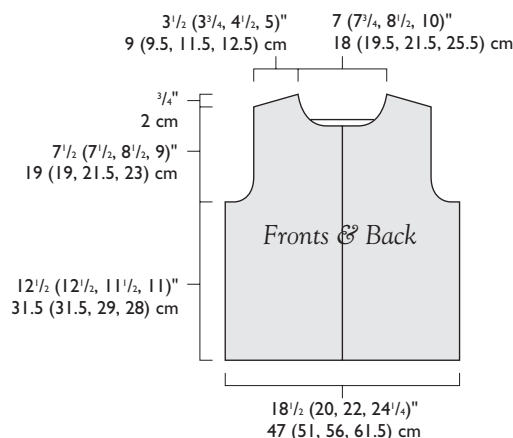
Back

With magenta and larger needles, CO 87 (95, 105, 115) sts. Knit 2 rows (garter st). Change to MC. Beg with a WS row, work St st until piece measures 12½ (12½, 11½, 11)" (31.5 [31.5, 29, 28] cm)

from beg, ending with a WS row. **Shape armholes:** BO 5 sts beg of next 2 rows—77 (85, 95, 105) sts rem. Dec 1 st each end of needle every other row 6 times—65 (73, 83, 93) sts rem. Work even until armholes measure 3½" (9 cm), ending with a WS row. **Next row:** (RS) Mark center 9 sts for back medallion placement. Cont working sts on either side of marked center sts in MC as established, and work center 9 sts in St st intarsia according to Rows 1–9 of Back Medallion chart. When chart is completed, cont in St st with MC until armholes measure 6½ (6½, 7½, 8)" (16.5 [16.5, 19, 20.5] cm), ending with a WS row. **Shape neck:** (RS) K16 (18, 21, 23), join new yarn and BO center 33 (37, 41, 47) sts, knit to end—16 (18, 21, 23) sts each side. Working each side separately, cont in St st for 1" (2.5 cm)—armholes should measure 7½ (7½, 8½, 9)" (19 [19, 21.5, 23] cm). **Shape shoulders:** At each armhole edge, BO 5 (6, 7, 8) sts 2 times, then BO 6 (6, 7, 7) sts once.

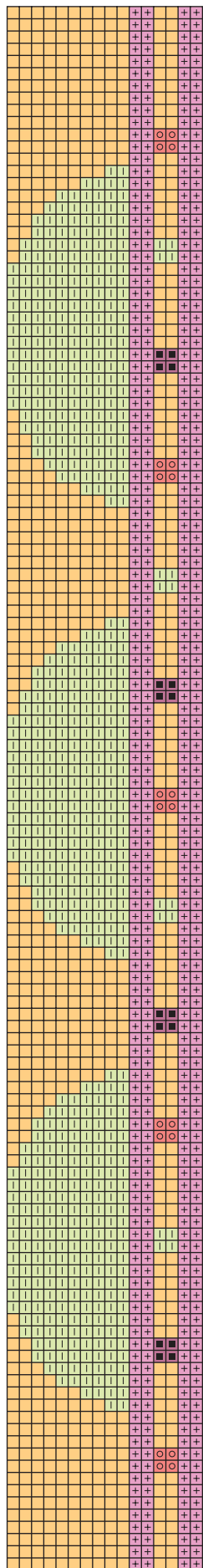
Right Front

With magenta and larger needles, CO 44 (48, 53, 58) sts. Knit 2 rows. Cut off magenta and join MC. **Set up row:** (WS) P38 (42, 47, 52) with MC, place marker (pm), rejoin magenta and work last 6 sts as p2 magenta, p2 MC, p2 magenta. Working sts outside chart in St st with MC, work sts at center front edge (first 16 sts of RS rows, last 16 sts of WS rows) in St st intarsia according to Right Front chart, working the 3rd and 4th sts from the edge of chart every row in MC; the other colors will be added

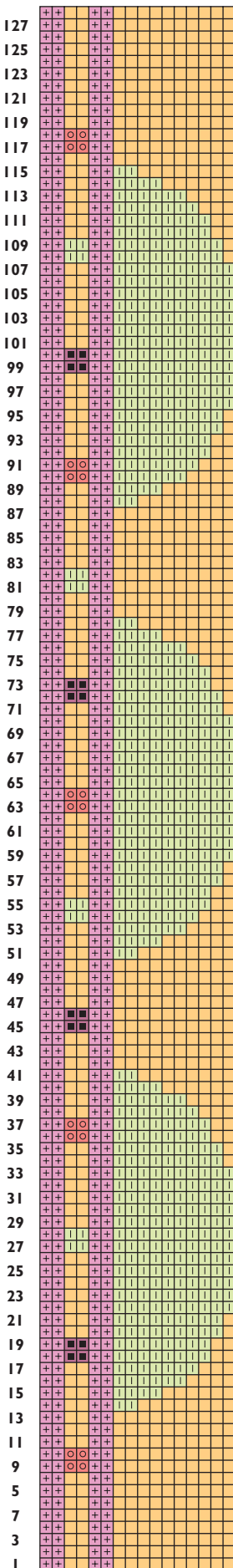




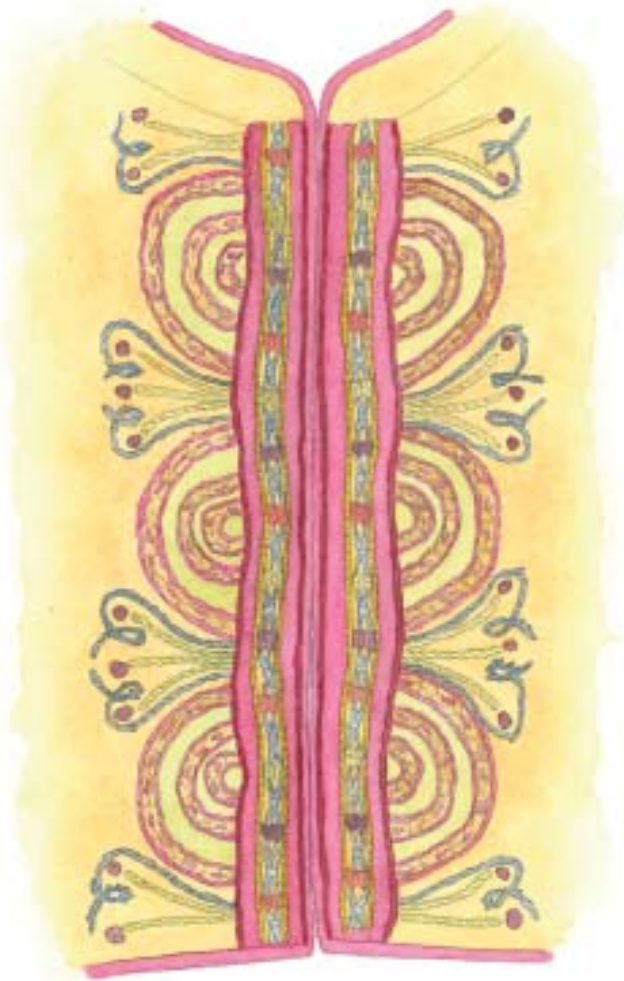
Right Front



Left Front



lion, then insert the needle into the center of the second Persian red st from the right, draw the thread through to the back; rep from * once more to complete 2 straight sts, one on top of the other. Work a second pair of straight sts in the same manner over the last 2 Persian red sts of Row 5, bringing the thread to the front in the center of the second st from the end, and inserting the needle into the last Persian red st to draw the thread to the back of the work. **Embroidery for sleeves:** With copper Sari, work 3 concentric rows of slip-stitch crochet or embroidered chain sts on each green half-circle motif as shown in illustration: one around the outer edge, one with about a 1" (2.5 cm) arc in the center, and a third row evenly spaced in between. With magenta metallic embroidery floss, work 1 row of backstitch embroidery on each side of each row of chain sts, then work a row of running st along the center of each chain. With peridot yarn, work flower stems in stem stitch as shown. With mulberry yarn, work a triple-wrapped French knot at the end of each stem as shown. With magenta metallic embroidery floss, work scroll pattern in backstitch around each group of stems. With Persian red yarn, work 1 row of backstitch above the top magenta row of sleeve cuff (Row 5 of sleeve chart). With 2 stands of teal blue embroidery floss and bright red and peridot yarns, work duplicate st on Rows 2 and 3 of sleeve chart as shown. With metallic brown/rose embroidery floss, work two lines of parallel running sts, one above Row 3 and one below Row 2 of sleeve chart, along the line of color change from MC to magenta. Work a double wrap at the center of each pair of running sts to draw them tog at their "waists." With magenta yarn, work a line of running sts between CO edge and garter ridge. **Embroidery for fronts:** (Note: Use consistent tension while embroidering, taking care not to work too tightly.) With copper Sari, work 3 concentric rows of slip-stitch crochet or embroidered chain sts on each green half-circle motif as for sleeves. With magenta metallic embroidery floss, work 1 row of backstitch embroidery on each side of each row of chain sts, then work a row of running sts along the center of each chain. With peridot yarn, work flower stems in stem stitch. With mulberry yarn, work a triple-wrapped French knot at the end of each stem. With blue metallic embroidery floss, work scroll pattern in backstitch around each group of stems. With Persian red yarn, work 1 row of backstitch between the 6th and 7th sts from the edge, along the



edge of the vertical magenta stripe, then work another row of backstitch between the first st and the I-cord edging. With bright red, mulberry, and peridot yarns, work duplicate st on the vertical stripe of MC as shown on chart. With metallic lime green embroidery floss work 1 row of slip-stitch crochet for embroidered chain sts along each side of the MC vertical stripe. With teal blue embroidery floss, work a line of parallel running sts up the center of each column of MC sts. Work a double wrap at the center of each pair of running sts to draw them tog. **Front closure:** Cut two pieces of bias seam tape, each 19½" (49.5 cm) long, slightly stretched. Turn each cut end under ½" (1.3 cm), and sew tape to inside edge of right and left fronts, just inside the I-cord edging. Mark positions for twenty evenly spaced hook-and-eye sets, the lowest about ½" (1.3 cm) up from bottom edge, and the highest at the base of the collar. Sew hooks and eyes to inside of jacket along the edge of the bias tape, so that the I-cord edging conceals them when the jacket is closed. Weave in loose ends. Steam-block lightly. ∞

LEIGH RADFORD is the art director for *Interweave Knits*. She lives in Portland, Oregon.



RISK-FREE TRIAL OFFER

Discover knitwear designs that will capture your imagination.

You don't have to be a designer or a knitting pro to make beautiful knitted garments and accessories, and you don't have to hunt all over for inspiring designs.

From cover to cover, *Interweave Knits* magazine gives you great projects, from the beginner to the advanced. Every issue is packed full of captivating smart designs, step-by-step instructions, easy-to-understand illustrations, plus well-written, lively articles sure to inspire.

Take advantage of this special risk-free offer today!

www.interweave.com/go/knitsJPDC6